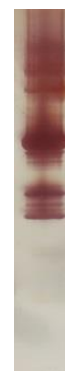


## Natural Gly m 6

### NA-GM6-1

Allergen:	nGly m 6 ( <i>Glycine max</i> allergen 6)
Lot No:	xxxxx
Source:	Glycinin from soybean.
Mol. Wt:	Multiple subunits ranging from 37-50 kD.
Purification:	Purified from soybean flour by multi-step HPLC. Purity > 95 % by silver stained SDS-PAGE.
Concentration:	See product insert.
Formulation:	Preservative and carrier-free in 1X PBS pH 7.4 Filtered through 0.22µm filter.
Storage:	Store at -20°C. Avoid repeated freeze-thaw cycles.



nGly m 6

**For Research Use Only: Not for Diagnostic or Therapeutic Use**

**An InBio™ product**

### REFERENCES:

1. Holzhauser T et al. Soybean (*Glycine max*) allergy in Europe: Gly m 5 (beta-conglycinin) and Gly m 6 (glycinin) are potential diagnostic markers for severe allergic reactions to soy. *J Allergy Clin Immunol.* 2009 Feb;123(2):452-8.
2. Ito K et al. IgE to Gly m 5 and Gly m 6 is associated with severe allergic reactions to soybean in Japanese children. *J Allergy Clin Immunol.* 2011 Sep;128(3):673-5.